

# Microscopy Redefined

Fisher Scientific  
Premier Microscopes



## Compound Research Microscopes with LED Illumination

With a wide range of features for university and laboratory use, these advanced research microscopes feature LED illumination, an option between achromat, super high contrast, plan, or plan phase optics, and choice of binocular or trinocular heads. This series includes built-in internal 110V-220V auto-switching power supply. Ergonomically designed, professional frame with low-position coaxial focusing allows one-handed operation, making extended use comfortable.



- » Inward-facing quadruple revolving nosepiece
- » Variable 3W LED illumination
- » Built-in low-drive mechanical stage with extended post for X and Y control (135x140mm)
- » 18mm eyepieces
- » 30° inclined ergonomic Siedentopf viewing head

### Specifications and Ordering Information

Model	Head	Eyepieces	Objectives	Stage	Condenser	Illumination
11350100	Monocular	18mm	Achromat DIN 4X, 10X, 40X, 100X	Mech.	Abbe/Iris	3W LED
11350101	Binocular	18mm	Achromat DIN 4X, 10X, 40X, 100X	Mech.	Abbe/Iris	3W LED
11350103	Monocular	18mm	Super High Contrast DIN 4X, 10X, 40X, 100X	Mech.	Abbe/Iris	3W LED
11350104	Binocular	18mm	Super High Contrast DIN 4X, 10X, 40X, 100X	Mech.	Abbe/Iris	3W LED
11350106	Monocular	18mm	Plan Achromat DIN 4X, 10X, 40X, 100X	Mech.	Abbe/Iris	3W LED
11350107	Binocular	18mm	Plan Achromat DIN 4X, 10X, 40X, 100X	Mech.	Abbe/Iris	3W LED
11350109	Binocular	18mm	Plan Phase 10X, 20X, 40X, 100X	Mech.	Abbe/Iris (w/ slot for phase slider)	3W LED

## Specifications and Ordering Information

<b>Models</b>	11350100, 11350101, 11350103, 11350104, 11350106, 11350107, 11350109
<b>Optical System</b>	DIN Standard
<b>Observation Tube</b>	11350100, 11350103, 11350106: Monocular head 11350101, 11350104, 113507, 11350109: Binocular head, Siedentopf
<b>Interpupillary Distance</b>	55-75mm
<b>Inclination</b>	30° inclined
<b>Eyepieces</b>	WF 10X/18mm
<b>Nosepiece</b>	Reversed quadruple revolving nosepiece
<b>Objective Classification</b>	DIN EA Achromatic (11350100, 11350101)
<b>Objective Classification</b>	DIN ASC/Semi-plan (11350103, 11350104)
<b>Objective Classification</b>	DIN Plan (11350106, 11350107)
<b>Objective Classification</b>	Finite Phase Contrast Plan (11350109)
<b>Objectives</b>	4X (0.10), 10X (0.25), 40X (0.65), 100X Oil Immersion (1.25) Achromat (11350100, 11350101)
<b>Objectives</b>	4X (0.10), 10X (0.25), 40X (0.65), 100X Oil Immersion (1.25) Super High Contrast (11350103, 11350104)
<b>Objectives</b>	4X (0.10), 10X (0.25), 40X (0.65), 100X Oil Immersion (1.25) Plan (11350106, 11350107)
<b>Objectives</b>	10X (0.1), 20X (0.25), 40X (0.45), 100X Oil Immersion (1.25) Plan Phase (11350109)
<b>Objective Mounting Thread</b>	W4/5" x 1/36" (RMS Standard)
<b>Stage</b>	Mechanical Stage
<b>Stage Size</b>	135x140mm
<b>Mechanical X&amp;Y Range</b>	76x50mm
<b>Condenser</b>	Abbe Condenser N.A. 1.25 with iris diaphragm (Five position phase turret condenser on 11350109)
<b>Focus Mechanism</b>	Coaxial coarse and fine focusing system with tension adjustment
<b>Fine Focus Precision</b>	1 µm minimum increment
<b>Z-Axis Movement</b>	17mm
<b>Illumination</b>	3W LED illumination with intensity control
<b>Transformer</b>	Internal
<b>Power Supply</b>	IEC 110V / 220V (UL / CSA)
<b>Accessories Included</b>	IEC Power Cord, Built-in Cord Hanger, Dustcover, Allen Key
<b>Dimensions</b>	340x180x390mm
<b>Weight</b>	6.5 kg
<b>Warranty</b>	5 year limited warranty, excluding bulbs, cords, and fuses

# Compound Research Microscopes with Koehler Illumination

With a wide range of features for university and laboratory use, these advanced research microscopes feature Koehler illumination, an option between infinity corrected optics or Plan Phase optics, and choice of binocular or trinocular heads. This series includes built-in internal 110V-220V auto-switching power supply. Ergonomically designed, professional frame with low-position coaxial focusing allows one-handed operation, making extended use comfortable.



11350111

- » Inward-facing quintuple revolving nosepiece
- » 3W LED Koehler illuminator with intensity control
- » Built-in low-drive large mechanical stage (160mm x 140mm) with extended post for X and Y control
- » 20mm eyepieces with rubber eyeshields
- » 30° inclined ergonomic viewing head

### Specifications and Ordering Information

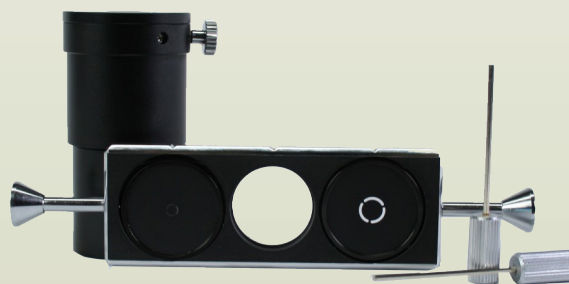
Model	Head	Eyepieces	Objectives	Stage	Condenser	Illumination
11350111	Binocular	20mm	Infinity Corrected 4X, 10X, 40X, 100X	Mech.	Abbe/Iris	3W LED Koehler
11350112	Trinocular	20mm	Infinity Corrected 4X, 10X, 40X, 100X	Mech.	Abbe/Iris	3W LED Koehler
11350113	Binocular	20mm	Phase 10X & 20X Plan 40X & 100X	Mech.	Abbe/Iris (w/ slot for contrast slider)	3W LED Koehler
11350114	Trinocular	20mm	Phase 10X & 20X Plan 40X & 100X	Mech.	Abbe/Iris (w/ slot for contrast slider)	3W LED Koehler

## Specifications and Ordering Information

<b>Models</b>	11350111, 11350112, 11350113, 11350114
<b>Optical System</b>	Infinity Corrected
<b>Observation Tube</b>	11350111 & 11350113: Binocular head, Siedentopf 11350112 & 11350114: Trinocular head, Siedentopf
<b>Interpupillary Distance</b>	55-75mm
<b>Inclination</b>	30° inclined
<b>Eyepieces</b>	N-WF 10X/20mm with diopter adjustment, +/- 5 diopter (Rubber eyeshields included)
<b>Nosepiece</b>	Reversed quintuple revolving nosepiece
<b>Objective Classification</b>	Infinity Corrected (and Phase Contrast for 11350113 & 11350114)
<b>Objectives (11350111 &amp; 11350112)</b>	Infinity Corrected 4X (0.10), 10X (0.25), 40X (0.65), 100X (1.25)
<b>Objectives (11350113 &amp; 11350114)</b>	Phase Contrast 10X (0.25), 20X (0.4) and Infinity Corrected 40X (0.65), 100X (1.25)
<b>Objective Mounting Thread</b>	W 4/5" x 1/36" (RMS Standard)
<b>Stage</b>	Built-in low position coaxial stage with specimen holder
<b>Stage Size</b>	140x160mm
<b>Mechanical X&amp;Y Range</b>	76x50mm
<b>Condenser</b>	Focusable Abbe Condenser N.A. 1.25 with iris diaphragm and slot for contrast sliders
<b>Focus Mechanism</b>	Coaxial coarse and fine focusing system with tension adjustment
<b>Fine Focus Precision</b>	1 µm minimum increment
<b>Z-Axis Movement</b>	17mm
<b>Filter Holder</b>	On top of the illuminator with fixing cap
<b>Illumination</b>	3W Koehler LED illumination with intensity control
<b>Transformer</b>	Internal
<b>Power Supply</b>	IEC 110V / 220V (UL / CSA)
<b>Accessories Included</b>	IEC Power Cord, Built-in Cord Hanger, Dustcover, Allen Key
<b>Dimensions</b>	407x196x414mm
<b>Weight</b>	7 kg
<b>Warranty</b>	5 year limited warranty, excluding bulbs, cords, and fuses



Condenser with phase slider installed



Phase components

# Advanced Research Microscopes with Koehler Illumination

With a wide range of features for university and laboratory use, these advanced research microscopes feature incredibly sharp infinity corrected EF-N Plan objectives, Koehler illumination and choice of binocular or trinocular heads. This series includes built-in internal 110V-220V auto-switching power supply. Ergonomically designed, professional frame with low-position coaxial focusing allows one-handed operation, making extended use comfortable.



- » Inward-facing quintuple revolving nosepiece
- » 3W LED Koehler illuminator with intensity control
- » Built-in low-drive large mechanical stage (160mm x 140mm) with extended post for X and Y control
- » 20mm eyepieces with rubber eyeshields
- » 30° inclined ergonomic viewing head
- » Infinity corrected EF-N optics

## Specifications and Ordering Information

Model	Head	Eyepieces	Objectives	Stage	Condenser	Illumination
11350115	Binocular	20mm	Infinity Corrected 4X, 10X, 40X, 100X	Mech.	Abbe/Iris	3W LED Koehler
11350116	Trinocular	20mm	Infinity Corrected 4X, 10X, 40X, 100X	Mech.	Abbe/Iris	3W LED Koehler



**Specifications and Ordering Information**

<b>Models</b>	11350115 and 11350116
<b>Optical System</b>	Infinity Corrected
<b>Observation Tube</b>	11350115: Binocular head, Siedentopf 11350116: Trinocular head, Siedentopf
<b>Interpupillary Distance</b>	55-75mm
<b>Inclination</b>	30° inclined
<b>Eyepieces</b>	N-WF 10X/20mm with diopter adjustment, +/- 5 diopter (Rubber eyeshields included)
<b>Nosepiece</b>	Reversed quintuple revolving nosepiece
<b>Objective Classification</b>	Infinity Corrected
<b>Objectives</b>	Infinity Corrected 4X (0.10), 10X (0.25), 40X (0.65), 100X (1.25)
<b>Objective Mounting Thread</b>	W 4/5" x 1/36" (RMS Standard)
<b>Stage</b>	Built-in low position coaxial stage with specimen holder
<b>Stage Size</b>	140x175mm
<b>Mechanical X&amp;Y Range</b>	76x50mm
<b>Condenser</b>	Focusable Abbe Condenser N.A. 1.25 with iris diaphragm and slot for contrast sliders
<b>Focus Mechanism</b>	Coaxial coarse and fine focusing system with tension adjustment
<b>Fine Focus Precision</b>	1 µm minimum increment
<b>Z-Axis Movement</b>	17mm
<b>Filter Holder</b>	On top of the illuminator with fixing cap
<b>Illumination</b>	3W Koehler LED illumination with intensity control
<b>Transformer</b>	Internal
<b>Power Supply</b>	IEC 110V / 220V (UL / CE / CSA)
<b>Accessories Included</b>	IEC Power Cord, Built-in Cord Hanger, Dustcover, Allen Key
<b>Dimensions</b>	407x196x414mm
<b>Weight</b>	7 kg
<b>Warranty</b>	5 year limited warranty, excluding bulbs, cords, and fuses

## Stereo Zoom Microscopes (1X-4X)

This series of zoom stereo microscopes offers the convenience and versatility of viewing items at 10X magnification then zoom continuously to maximum detail at 40X magnification...or at any point in between. The upright, unreversed image remains in focus throughout the zoom range. Available in binocular or trinocular head types. The trinocular head features a port to accept optional video C-mount and SLR camera adapters (included). This series is also available in three base configurations: post mount, platform, or boom stand.



11350124 (Post Stand)

- » Viewing head rotates 360°
- » 1X-4X Zoom
- » Achromatic, color-corrected lenses
- » Tension adjustment eliminates focus "drift"
- » 80mm working distance
- » Large dual focusing knobs with slip clutch to prevent damage to mechanism

### Specifications and Ordering Information

Model	Head	Eyepieces	Stand Type	Objectives	Illumination
11350124	Binocular	WF10X	Post	1X to 4X Zoom (10X thru 40X mag.)	Top: Halogen Bottom: Fluorescent
11350125	Binocular	WF10X	Platform Stand	1X to 4X Zoom (10X thru 40X mag.)	None
11320126	Binocular	WF10X	Boom Stand	1X to 4X Zoom (10X thru 40X mag.)	None
11350127	Trinocular	WF10X	Post	1X to 4X Zoom (10X thru 40X mag.)	Top: Halogen Bottom: Fluorescent
11350128	Trinocular	WF10X	Platform Stand	1X to 4X Zoom (10X thru 40X mag.)	None
11350129	Trinocular	WF10X	Boom Stand	1X to 4X Zoom (10X thru 40X mag.)	None



## Specifications and Ordering Information

<b>Models</b>	11350124, 11350125, 11350126, 11350127, 11350128, 11350129
<b>Optical System</b>	DIN Standard
<b>Observation Tube</b>	11350124, 11350125, 11350126: Binocular, Siedentopf 11350127, 11350128, 11350129: Trinocular, Siedentopf
<b>Interpupillary Distance</b>	55-75mm
<b>Inclination</b>	45° inclined
<b>Eyepieces</b>	WF10X/20mm
<b>Nosepiece</b>	Zoom
<b>Objective Classification</b>	Achromatic, color corrected
<b>Objectives</b>	1X-4X Zoom
<b>Base</b>	11350124 & 11350127: Post / 11350125 & 11350128: Platform / 11350126 & 11350129: Boom
<b>Stage (11350124 &amp; 11350127)</b>	Two 80mm stage plates (frosted glass & reversible black & white plastic contrast plates) Blue filter for transmitted light Locked-on stage clips
<b>Stand (11350125 &amp; 11350128)</b>	82mm reversible black & white contrast plate All-metal stand Heavy-duty post mount with locking support collar permits up or down adjustment of viewing head
<b>Stand (11350126 &amp; 11350129)</b>	All-metal stand Heavy-duty post mount with locking support collar permits up or down adjustment of viewing head
<b>Illumination</b>	11350124 & 11350127: Top: Halogen & Bottom: Fluorescent 11350125, 11350126, 11350128, 11350129: None
<b>Focusing</b>	Rack & pinion focusing with large dual focusing knobs with slip clutch and tension adjustment to eliminate focus "drift"
<b>Transformer</b>	Internal
<b>Power Supply</b>	110V
<b>Accessories Included</b>	Dustcover, rubber eyeshields, glass stage plate, black & white contrast stage plate
<b>Dimensions / Weight</b>	11350124 & 11350127: H: 340mm, extends to 433mm / Base W: 171mm / Base D: 242mm / Net wt.: 5.3kg
<b>Dimensions / Weight</b>	11350125 & 11350128: H: 246mm / Post Length: 220mm / Base W: 220mm / Base D: 280mm / Net wt.: 2.8 kg
<b>Dimensions / Weight</b>	11350126 & 11350129: H: 432mm / Base Dim.: 298x298mm / Horiz. & Vert. Post Length: 381mm / Net wt.: 24.1kg
<b>Packing Dimensions / Weight</b>	11350124 & 11350127: Dimensions: 550x375x375mm / Ship wt.: 7.7kg
<b>Packing Dimensions / Weight</b>	11350125 & 11350128: Dimensions: 550x375x375mm / Ship wt.: 7.7kg
<b>Packing Dimensions / Weight</b>	11350126 & 11350129: Dimensions: 660x381x280mm / Ship wt.: 30kg
<b>Warranty</b>	5 year limited warranty, excluding bulbs, cords, and fuses



11350128 (Platform Stand)



11350126 (Boom Stand)

# Stereo Zoom Microscopes (0.75X-5X)

The convenience and versatility of viewing a large picture at 7.5X magnification, then zooming continuously all the way to close-up detail at 50X magnification in standard configuration. The 35° inclined viewing head provides an upright, unreversed image which permits easy manipulation of object being viewed while looking through the microscope. The incidental and transmitted illuminators incorporate high intensity color temperature 3W LED lamps.



11350120

- » Viewing head rotates 360°
- » 0.75X-5X Zoom
- » Achromatic, color-corrected lenses
- » Incidental and transmitted LED illumination
- » Rheostat intensity control
- » Anti-fungus properties

## Specifications and Ordering Information

Model	Head	Eyepieces	Stand Type	Objectives	Illumination
11350120	Binocular	WF10X	Post	0.75X to 5X Zoom (7.5X thru 50X mag.)	Top: LED Bottom: LED
11350121	Trinocular	WF10X	Post	0.75X to 5X Zoom (7.5X thru 50X mag.)	Top: LED Bottom: LED

## Specifications and Ordering Information

<b>Models</b>	11350120 and 11350121
<b>Optical System</b>	DIN Standard
<b>Observation Tube</b>	11350120: Binocular, Siedentopf 11350121: Trinocular, Siedentopf
<b>Interpupillary Distance</b>	55-75mm
<b>Inclination</b>	35° inclined
<b>Eyepieces</b>	WF10X/23mm
<b>Nosepiece</b>	Zoom
<b>Objective Classification</b>	Achromatic, color corrected
<b>Objectives</b>	0.75X-5X Zoom
<b>Base</b>	Post
<b>Stage</b>	Two 80mm stage plates (frosted glass & reversible black & white plastic contrast plates) Locked-on stage clips
<b>Illumination</b>	Top and Bottom: LED
<b>Focusing</b>	Rack & pinion focusing with large dual focusing knobs with slip clutch and tension adjustment to eliminate focus “drift”
<b>Transformer</b>	Internal
<b>Power Supply</b>	110V-220V
<b>Accessories Included</b>	Dustcover, rubber eyeshields, glass stage plate, black & white contrast stage plate
<b>Dimensions / Weight</b>	H: 381mm / W: 280mm / D: 254mm / Net wt.: 5.4kg
<b>Packing Dimensions / Weight</b>	Dimensions: 585x432x331mm / Ship wt.: 7.3kg
<b>Warranty</b>	5 year limited warranty, excluding bulbs, cords, and fuses

## Stereo Microscopes with Dual Magnification

Precise optical alignment assures an upright, unreversed three-dimensional image that is unsurpassed. Perform everything from dissection to examination. Specially designed incidental lamp can be directed precisely where needed, and includes intensity control. Transmitted illumination is fluorescent for optimum light and cool temperature, prolonging the life of living specimen. Choose between WF10X and WF15X eyepieces, and 1X/3X objectives or 2X/4X objectives.



15000100

- » Viewing head rotates 360°
- » Incidental halogen illumination & transmitted fluorescent illumination with intensity control
- » Achromatic, color-corrected lenses
- » Tension adjustment eliminates focus "drift"
- » Large dual focusing knobs with slip clutch to prevent damage to mechanism

### Specifications and Ordering Information

Model	Head	Eyepieces	Stand Type	Objectives	Illumination
15000100	Inclined	WF10X	Post	1X & 3X (10X & 30X mag.)	Top: Halogen Bottom: Fluorescent
15000101	Inclined	WF10X	Post	2X & 4X (20X & 40X mag.)	Top: Halogen Bottom: Fluorescent
11350122	Inclined	WF15X	Post	1X & 3X (15X & 45X mag.)	Top: Halogen Bottom: Fluorescent
11350123	Inclined	WF15X	Post	2X & 4X (30X & 60X mag.)	Top: Halogen Bottom: Fluorescent

## Specifications and Ordering Information

<b>Models</b>	15000100, 15000101, 11350122, 11350123
<b>Optical System</b>	DIN Standard
<b>Observation Tube</b>	Binocular head, Siedentopf
<b>Interpupillary Distance</b>	55-75mm
<b>Inclination</b>	45° inclined
<b>Eyepieces</b>	15000100 & 15000101: WF10X/18mm 11350122 & 11350123: WF15X/18mm
<b>Objective Classification</b>	Achromatic, color corrected
<b>Objectives</b>	15000100 & 11350122: 1X & 3X 15000101 & 11350123: 2X & 4X
<b>Base</b>	Post
<b>Stage</b>	Two 80mm stage plates (frosted glass & reversible black & white plastic contrast plates) Blue filter for transmitted light Locked-on stage clips
<b>Illumination</b>	Top: Halogen / Bottom: Fluorescent
<b>Focusing</b>	Heavy-duty rack & pinion focusing with large dual focusing knobs with slip clutch and tension adjustment to eliminate focus "drift"
<b>Transformer</b>	Internal
<b>Power Supply</b>	110V
<b>Accessories Included</b>	Dustcover, rubber eyeshields, glass stage plate, black & white contrast stage plate
<b>Dimensions / Weight</b>	Base width: 171mm / Base Depth: 242mm / Height: 325mm
<b>Packing Dimensions / Weight</b>	550x375x375mm / Ship wt.: 7.3kg
<b>Warranty</b>	5 year limited warranty, excluding bulbs, cords, and fuses

# Stereo LED Microscopes with Dual Magnification

The Stereo LED Microscopes with Dual Magnification have all the quality, features, and versatility of larger stereo models in a compact size. Designed to provide an upright, unreversed image, these microscopes are ideal for viewing three-dimensional objects and inspection. With rechargeable LED illumination, these models allow freedom from cords and outlets. Choose between 1X/3X and 2X/4X objective options.



- » Fixed arm and head
- » Widefield eyepieces with diopter
- » LED light rated up to 50,000 hours
- » Batteries allow up to 500 recharges
- » Auto-cutoff recharger included
- » Single 8 hour charge allows up to 50 hours of use

## Specifications and Ordering Information

Model	Head	Eyepieces	Stand Type	Objectives	Illumination
15000102	Inclined	WF10X	Fixed Arm	1X & 3X (10X & 30X mag.)	Top/Bottom: Rechargeable LED
15000103	Inclined	WF10X	Fixed Arm	2X & 4X (20X & 40X mag.)	Top/Bottom: Rechargeable LED



## Specifications and Ordering Information

<b>Models</b>	15000102 & 15000103
<b>Optical System</b>	DIN Standard
<b>Observation Tube</b>	Binocular head, Siedentopf
<b>Interpupillary Distance</b>	55-75mm
<b>Inclination</b>	45° inclined
<b>Eyepieces</b>	WF10X/18mm
<b>Objective Classification</b>	Achromatic, color corrected
<b>Objectives</b>	15000102: 1X & 3X 15000103: 2X & 4X
<b>Base</b>	Fixed Arm
<b>Stage</b>	Two 80mm stage plates (frosted glass & reversible black & white plastic contrast plates) Locked-on stage clips
<b>Illumination</b>	Top/Bottom: Rechargeable LED
<b>Focusing</b>	Heavy-duty rack & pinion focusing with large dual focusing knobs with slip clutch and tension adjustment to eliminate focus “drift”
<b>Transformer</b>	Internal
<b>Power Supply</b>	110V
<b>Accessories Included</b>	Dustcover, rubber eyeshields, glass stage plate, black & white contrast stage plate
<b>Dimensions / Weight</b>	Base width: 115mm / Base depth: 197mm / Height: 310mm / Net wt.: 2.5kg
<b>Packing Dimensions / Weight</b>	400x425x275mm / Ship wt.: 4.1kg
<b>Warranty</b>	5 year limited warranty, excluding bulbs, cords, and fuses

## Stereo Zoom Microscope (1X-3X)

The Stereo Zoom Microscope is an exceptional 1:3 stereo zoom microscope. This model permits users to view objects at 10X magnification, then zoom all the way to 30X for a close-up view. By simply turning the objective turret, magnification can be changed from 10X to 30X, and every point in between.



- » Continuous magnification 10X-30X
- » Incidental halogen illumination & transmitted fluorescent illumination
- » Locked-on stage clips
- » Heavy-duty rack and pinion focusing
- » Fixed arm stand

### Specifications and Ordering Information

Model	Head	Eyepieces	Stand Type	Objectives	Illumination
15000104	Inclined	WF10X	Fixed Arm	1X to 3X Zoom (10X thru 30X mag.)	Top: Halogen Bottom: Fluorescent

**Specifications and Ordering Information**

<b>Models</b>	15000104
<b>Optical System</b>	DIN Standard
<b>Observation Tube</b>	Binocular head, Siedentopf
<b>Interpupillary Distance</b>	55-75mm
<b>Inclination</b>	45° inclined
<b>Eyepieces</b>	WF10X/20mm
<b>Nosepiece</b>	Zoom
<b>Objective Classification</b>	Achromatic, color corrected
<b>Objectives</b>	1X-3X Zoom
<b>Base</b>	Fixed Arm
<b>Stage</b>	Two 80mm stage plates (frosted glass & reversible black & white plastic contrast plates) Blue filter for transmitted light Locked-on stage clips
<b>Illumination</b>	Top: 12V 10W Halogen / Bottom: 110V 5W Fluorescent
<b>Focusing</b>	Heavy-duty rack & pinion focusing with large dual focusing knobs with slip clutch and tension adjustment to eliminate focus "drift"
<b>Transformer</b>	Internal
<b>Power Supply</b>	110V
<b>Accessories Included</b>	Dustcover, rubber eyeshields, glass stage plate, black & white contrast stage plate
<b>Dimensions / Weight</b>	Base width: 215mm / Base depth: 220mm / Height: 317mm / Net wt.: 4kg
<b>Packing Dimensions / Weight</b>	550x350x375mm / Ship wt.: 5.9kg
<b>Warranty</b>	5 year limited warranty, excluding bulbs, cords, and fuses

# Inverted Infinity and Phase Contrast Microscope

With a wide range of features for university and laboratory use, this advanced research microscope features infinity corrected and phase contrast optics, halogen illumination and trinocular head. Complementing the illumination system is the ELWD (Extra Long Working Distance) 0.30 N.A. condenser with its 72mm working distance for larger sample sizes. The condenser is also adjustable, to provide the optimum amount of illumination for each sample. This series includes built-in internal 110V-220V auto-switching power supply. Ergonomically designed, professional frame with low-position coaxial focusing allows one-handed operation, making extended use comfortable.

Supporting these advanced features is the stable “Y” designed stand. The inverted “Y” provides the necessary stability and weight distribution to handle optional Epi-fluorescence attachments. This microscope is an essential tool when viewing living organisms within nutrient medium in petri dishes or cell culture flasks.



- » Trinocular head Siedentopf type with light splitter (100% or 20/80%)
- » Ergonomic 45° observation angle
- » Side facing quintuple nosepiece
- » Infinity corrected optics
  - » 4X infinity
  - » 10X and 20X infinity and phase
- » ELWD N.A. 0.30 condenser
- » Koehler illumination quartz halogen 6V/30W with intensity control
- » Plain stage with glass and metal inserts

## Specifications and Ordering Information

Model	Head	Eyepieces	Objectives	Stage	Condenser	Illumination
11350119	Trinocular	22mm	Infinity Corrected 4X, 10X (Phase), 20X (Phase)	Plain	ELWD N.A. 0.30	6V/30W Halogen Koehler

### Specifications and Ordering Information

<b>Models</b>	11350119
<b>Optical System</b>	Infinity Corrected
<b>Observation Tube</b>	Trinocular head, Siedentopf
<b>Interpupillary Distance</b>	50-70mm
<b>Inclination</b>	45° inclined
<b>Eyepieces</b>	N-WF 10X/22mm with diopter adjustment, +/- 5 diopter (Rubber eyeshields included)
<b>Nosepiece</b>	Side facing quintuple revolving nosepiece
<b>Objective Classification</b>	Infinity Corrected (Phase Contrast for 10X and 20X)
<b>Objectives</b>	Infinity Corrected 4X (0.10), Phase 10X (0.25) and 20X (0.4)
<b>Stage</b>	Built-in low position plain stage with glass and metal stage inserts
<b>Stage Size</b>	200x260mm
<b>Condenser</b>	Extra Long Working Distance 0.30 N.A. Condenser
<b>Focus Mechanism</b>	Coaxial coarse and fine focusing system with tension adjustment
<b>Fine Focus Precision</b>	2 $\mu$ m minimum increment
<b>Filter Holder</b>	On side of illuminator
<b>Illumination</b>	6V/30W quartz halogen Koehler illumination with intensity control
<b>Transformer</b>	Internal
<b>Power Supply</b>	IEC 110V / 220V (UL / CE)
<b>Accessories Included</b>	IEC power cord, centering telescope, phase slider, glass and metal stage inserts, blue and green interference filters, allen hex keys (2), dust cover
<b>Dimensions</b>	388x200x529mm
<b>Weight</b>	11.4kg
<b>Warranty</b>	5 year limited warranty, excluding bulbs, cords, and fuses



Phase components



Metal and glass stage insert

## Digital Compound Microscopes with Built-In Camera

Superior in design and performance, these microscopes incorporate a variety of features designed for university and laboratory use. With integrated HDMI camera, the 11350138, 11350139, and 11350140 feature HDMI output and 5.0 MP captured still images. The 11350135, 11350136, and 11350137 feature 3.0 MP live imaging with powerful Motic Images software.



1135050138

- » Quad objective turret
- » Large, built-in, low-profile mechanical stage
- » 1.25 N.A. Abbe condenser
- » Coaxial focusing
- » Built-in digital camera

### Specifications and Ordering Information

Model	Head	Camera	Eyepieces	Objectives	Stage	Condenser	Illumination
11350135	Binocular	3.0 MP	WF10X (P)	Super High Contrast 4X, 10X, 40XR, 100XR	Mech.	1.25 Abbe	12V 20W Halogen
11350136	Binocular	3.0MP	WF10X (P)	Plan 4X, 10X, 40XR, 100XR	Mech.	1.25 Abbe	12V 20W Halogen
11350137	Binocular	3.0 MP	WF10X (P)	Plan Phase 10X, 20X, 40XR, 100XR	Mech.	Phase Turret	12V 20W Halogen
11350138	Binocular	1080 via HDMI, 5.0 MP via SD card, 640x480 PC/Mac	WF10X (P)	Super High Contrast 4X, 10X, 40XR, 100XR	Mech.	1.25 Abbe	12V 20W Halogen
11350139	Binocular	1080 via HDMI, 5.0 MP via SD card, 640x480 PC/Mac	WF10X (P)	Plan 4X, 10X, 40XR, 100XR	Mech.	1.25 Abbe	12V 20W Halogen
11350140	Binocular	1080 via HDMI, 5.0 MP via SD card, 640x480 PC/Mac	WF10X (P)	Plan Phase 10X, 20X, 40XR, 100XR	Mech.	Phase Turret	12V 20W Halogen



## Specifications and Ordering Information

<b>Models</b>	11350135, 11350136, 11350137, 11350138, 11350139, 11350140
<b>Optical System</b>	DIN Standard Optical System
<b>Observation Tube</b>	Binocular head
<b>Interpupillary Distance</b>	54-76mm
<b>Inclination</b>	30° inclined
<b>Eyepieces</b>	WF 10X/18mm
<b>Nosepiece</b>	Reversed quadruple revolving nosepiece
<b>Objective Classification</b>	Super High Contrast (11350135 & 11350138), Plan (11350136 & 11350139), and Plan Phase (11350137 & 11350140)
<b>Objectives (11350135 &amp; 11350138)</b>	Super High Contrast 4X (0.10), 10X (0.25), 40XR (0.65), and 100XR (1.25)
<b>Objectives (11350136 &amp; 11350139)</b>	Plan 4X (0.10), 10X (0.25), 40XR (0.65), and 100XR (1.25)
<b>Objectives (11350137 &amp; 11350140)</b>	Plan Phase 10X (0.25), 20X (0.4), 40XR (0.65), 100XR (1.25)
<b>Stage</b>	Built-in low-position coaxial stage with specimen holder
<b>Stage Size</b>	140x135mm
<b>Mechanical X&amp;Y Range</b>	70x50mm
<b>Condenser</b>	Focusable Abbe Condenser N.A. 1.25
<b>Focus Mechanism</b>	Coaxial coarse and fine focusing system with tension adjustment
<b>Fine Focus Precision</b>	1µm minimum increment
<b>Filter Holder</b>	32mm
<b>Illumination</b>	12V 20W Halogen with variable rheostat
<b>Transformer</b>	Internal
<b>Power Supply</b>	IEC 110V / 220V (UL)
<b>Accessories Included</b>	IEC Power Cord, Dustcover, Blue, Green, and Yellow Filters
<b>Dimensions</b>	Base: 185x235mm / Height: 405mm
<b>Weight</b>	6.3kg
<b>Microscope Warranty</b>	5 year limited warranty, excluding bulbs, cords, and fuses
<b>Camera Warranty</b>	1 year
<b>Important Minimum Specifications</b>	Processor: 2Ghz or above USB: 2.0 RAM: 1 MB Hard Disk: 500 MB Video Card: 128 MB

# Digital Stereo Microscope with Built-In 3.0MP Camera

The Digital Stereo Microscope with Built-In 3.0MP Camera offers the convenience and versatility of viewing specimen at 10X magnification, then zooming continuously to view close-up detail at 40X magnification. The upright, unreversed image remains in focus throughout zoom range. Superb optical clarity and reliable mechanical engineering assure years of top performance. The 11350134 features a high-resolution 3.0MP digital camera built-in, but can also be operated as a fully functional microscope independent of the camera. Microscope comes with Motic Images software.



- » Built-in 3.0MP camera
- » 1-4X Zoom
- » Top and bottom halogen illumination with intensity control
- » WF10X eyepieces
- » Achromatic, color-corrected lenses
- » Large (165x220mm) stage surface

## Specifications and Ordering Information

Model	Head	Camera	Eyepieces	Objectives	Stage	Illumination
11350134	Binocular	3.0MP	WF10X	1X to 4X Zoom (10X-40X mag.)	Clips	Top: 12V 15W Halogen Bottom: 12V 10W Halogen

### Specifications and Ordering Information

<b>Models</b>	11350134
<b>Optical System</b>	DIN Standard
<b>Observation Tube</b>	Binocular head
<b>Interpupillary Distance</b>	55-75mm
<b>Inclination</b>	45° inclined
<b>Eyepieces</b>	WF10X/23mm
<b>Nosepiece</b>	Zoom
<b>Objective Classification</b>	Achromatic, color corrected
<b>Objectives</b>	1X-4X Zoom
<b>Base</b>	Post Mount
<b>Stage</b>	Large (165x220mm) deep stage surface Two 80mm stage plates (frosted glass & reversible black & white plastic contrast plates) Blue filter for transmitted light Locked-on stage clips
<b>Illumination</b>	Top: 12V 15W Halogen / Bottom: 12V 10W Halogen
<b>Focusing</b>	Heavy-duty rack & pinion focusing with large dual focusing knobs with slip clutch and tension adjustment to eliminate focus "drift"
<b>Transformer</b>	Internal
<b>Power Supply</b>	12VDC power converted operates on 100V-240V 50H/60H current, without need of additional transformer
<b>Accessories Included</b>	Dustcover, rubber eyeshields, glass stage plate, black & white contrast stage plate, Motic Images software
<b>Dimensions / Weight</b>	Base: 165x220mm / Height: 330mm - extends to 433mm / Net wt.: 5.1kg
<b>Packing Dimensions / Weight</b>	450x425x275mm / Ship wt.: 8.2kg
<b>Microscope Warranty</b>	5 year limited warranty, excluding bulbs, cords, and fuses
<b>Camera Warranty</b>	1 year limited warranty

## Digital Microscope Cameras

Use your microscope to create still or moving images on your computer using these microscope cameras. With the included Motic software, you can view, capture, enhance, label, measure, print, and store images with one program. These lightweight digital cameras fit over virtually any eyepiece (compound or stereo) with supplied eyepiece adapters. A multi-tasking microscopy camera, the 15000109 features direct 1080 HDMI output to any HD ready monitor, and images can be captured onto an SD card at 5.0MP resolution. The 15000110 has the capability to stream live images to your WiFi enabled tablet, cell phone or computer, connect up to five devices without the need for a router. Download the free MotiConnect App from the App Store or the Google Play Store.



15000109

- » Live, digital output
- » Detachable USB cable
- » Feature-packed Motic Images Plus software
- » Makes any microscope digital
- » HDMI output (15000109)
- » Generates own WiFi signal - no additional router needed (15000110)

### Specifications and Ordering Information

Model	Digital Interface	Max Resolution	Application
15000105	USB	2.0 MP 1600x1200	Whiteboards, compound or stereo microscopes, independently, PC, Mac
15000106	USB	3.0 MP 2048x1536	Ideal for live imaging, printed images, LCD projectors, live streaming video, PC, Mac
15000107	USB	5.0 MP	High-quality printed images, publishing and viewing on LCD screens, PC, Mac
15000108	USB	10.0 MP	High-resolution documentation and publication camera, PC, Mac
15000109	USB	1080 via HDMI, 5.0 MP (captured to SD card), 640x480 PC/Mac	For use with HDMI direct output or capture to SD card
15000110	WiFi	1.3 MP 1280x1024 (WiFi)	Stream live images to iOS and Android devices

## Specifications and Ordering Information

Moticam	2	3	5	10	580	X
Sensor Type	CMOS	CMOS	CMOS	CMOS	CMOS	CMOS
Chip Size	1/3"	1/2"	1/2.5"	1/2.3"	1/2.5"	1/3"
Capture Format (on SD card)	-	-	-	-	still image 2592x1944 (5MP) / Video HD 1080	-
Active Resolution (through USB)	1600x1200 (2MP) @ 5 fps*	2048x1536 (3MP) @ 6 fps*	2592x1944 (5MP) @ 4 fps*	3664x2748 (10MP) @ 2.2 fps*	1280x960 (1.3MP) @ 15 fps*	1280x1024 (1.3MP) (WiFi only)
Active Resolution (through HDMI)	-	-	-	-	1920x1080 (HD) @ 30 fps*	-
Interface Connection	USB	USB	USB	USB	HDMI (1080i), AV and USB	WiFi
Pixel Size	3.2µm x 3.2µm	3.2µm x 3.2µm	2.2µm x 2.2µm	1.67µm x 1.67µm	2.2µm x 2.2µm	2.8µm x 2.8µm
Imaging Area	5.12mm x 3.84mm	6.55mm x 4.92mm	5.70mm x 4.28mm	6.12mm x 4.59mm	5.70mm x 4.28mm	4.48mm x 3.36mm
Operating Temp	From -30 to +70 Degrees Celsius non condensing					
Max. Signal to Noise Ration	43dB	43dB	38.1dB	34dB	38.1dB	42dB
Dynamic Range	61dB	61dB	70.1dB	66.5dB	70.1dB	68dB
Slot	-	-	-	-	SD Card (max 32GB)	-
Supported OS	Microsoft Windows XP/Vista/7; Apple Mac OS					Android (ICS & higher) iOS (OS5 & higher) Webbrowser (HTML5)
Warranty	1 year					

\* frames per second under optimal illumination conditions



15000106



15000110

# Compound Research Microscopes with Camera Options

With a wide range of features for university and laboratory use, these two bundle options feature infinity corrected optics, Koehler illumination and the option of a 3.0 MP or 1080 HDMI camera. These microscopes include built-in internal 110V-220V auto-switching power supply. Ergonomically designed, professional frame with low-position coaxial focusing allows one-handed operation, making extended use comfortable.



- » Choose between 3.0MP camera or 1080 HDMI camera
- » Video c-mount adapter (0.5X lens)
- » 4X, 10X, 40X, and 100X infinity plan objectives
- » 3W LED Koehler illumination with intensity control
- » Built-in 160x140mm mechanical stage with extended X/Y post control

## Specifications and Ordering Information

Model	Head	Eyepieces	Objectives	Stage	Condenser	Illumination	Camera Type
11350130	Trinocular	20mm	4X, 10X, 40X, 100X Infinity Plan EF-N	Mech.	Abbe w/ Iris Diaphragm	3W LED Koehler	3.0MP
11350131	Trinocular	20mm	4X, 10X, 40X, 100X Infinity Plan EF-N	Mech.	Abbe w/ Iris Diaphragm	3W LED Koehler	1080 HDMI



## Compound Research Microscopes with 3.0MP Camera

With a wide range of features for university and laboratory use, these two bundle options feature infinity corrected or Plan Phase optics, Koehler illumination and a Moticam 3 digital camera. These microscopes include built-in internal 110V-220V auto-switching power supply. Ergonomically designed, professional frame with low-position coaxial focusing allows one-handed operation, making extended use comfortable.



- » 3.0 MP digital camera
- » Video c-mount adapter (0.5X lens)
- » 3W LED Koehler illumination with intensity control
- » Built-in 160x140mm mechanical stage with extended X/Y post control
- » Inward-facing quintuple revolving nosepiece
- » 20mm eyepieces

### Specifications and Ordering Information

Model	Head	Eyepieces	Objectives	Stage	Condenser	Illumination	Camera Type
11350132	Trinocular	20mm	4X, 10X, 40X, 100X Infinity Corrected	Mech.	Abbe w/ Iris Diaphragm	3W LED Koehler	3.0MP
11350133	Trinocular	20mm	10X & 20X Phase 40X & 100X Plan	Mech.	Abbe w/ Iris Diaphragm	3W LED Koehler	3.0MP

# Microscopy Redefined

Compound, Stereo, and  
Digital Imaging Products

© 2015 Thermo Fisher Scientific Inc. All rights reserved.  
Trademarks used are owned as indicated at [www.fishersci.com/trademarks](http://www.fishersci.com/trademarks).

#### In the United States:

For customer service, call 1-800-766-7000  
To fax an order, use 1-800-926-1166  
To order online: [www.fishersci.com](http://www.fishersci.com)

BN0910143

#### In Canada:

For customer service, call 1-800-234-7437  
To fax an order, use 1-800-463-2996  
To order online: [www.fishersci.ca](http://www.fishersci.ca)



A Thermo Fisher Scientific Brand